



e-factory

ENGEL e-factory – the Future of the ENGEL Monitoring System



ENGEL e-factory benefits compared with EMS

Future-proof

thanks to one of the most modern development environments currently available, and to our choice of efficient programming languages. New features on the current EMS roadmap or currently under development will only be available for ENGEL e-factory, for example:

- > Advanced quality data acquisition
- > New statistics functions
- > New IMSTAR process monitoring

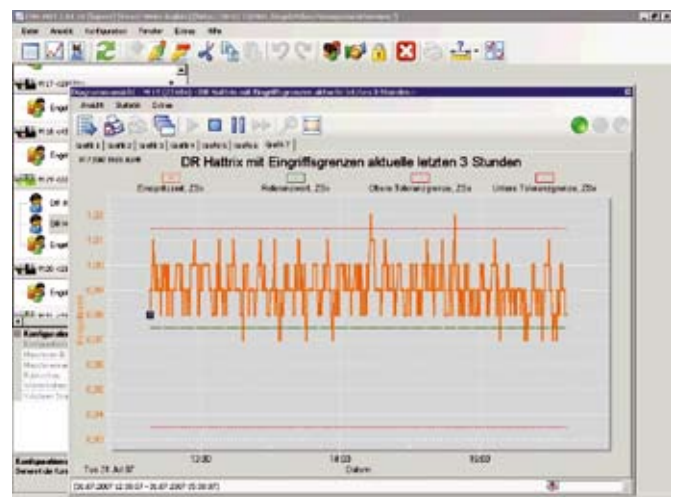
Improved ergonomics

thanks to a completely new look and feel

The ENGEL Monitoring System (EMS) was installed over 400 times as the central computer system for ENGEL injection moulding machines. What our customers appreciate about EMS is that it is simple to use and gives them a clear overview, thereby adding more transparency to production.

Now ENGEL is moving EMS to a new, future-proof platform under the new ENGEL e-factory brand. ENGEL e-factory contains the full set of EMS modules and features.

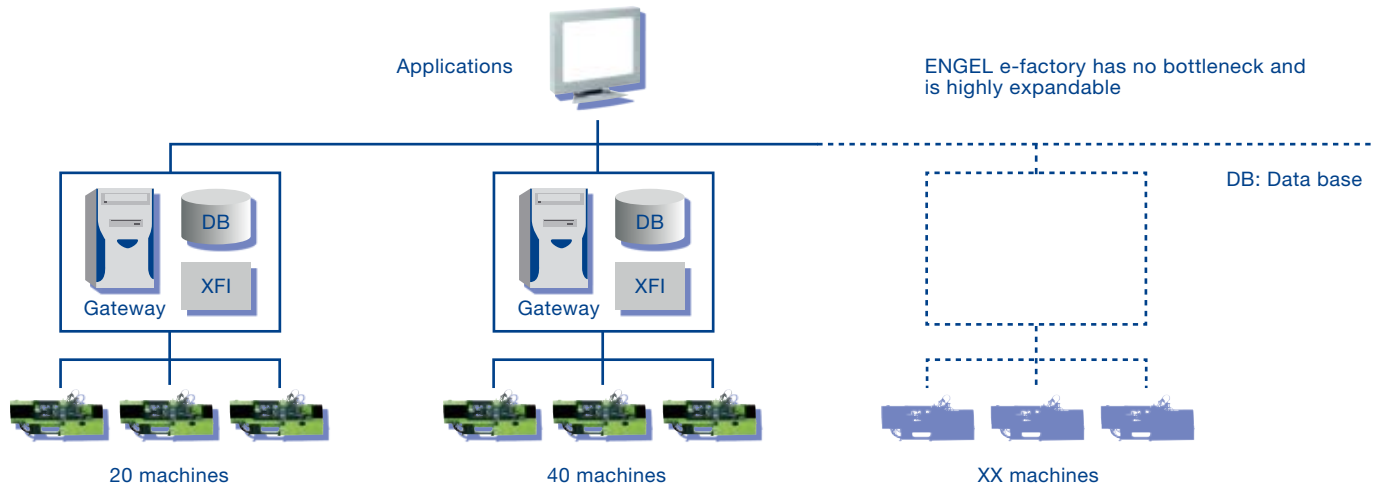
For a transitional period, ENGEL will continue to support users with EMS and all previously available EMS modules. You will continue to benefit from your investment in machine networking in future. You may need to determine whether your PCs' performance is adequate for the new challenge.



ENGEL
be the first.

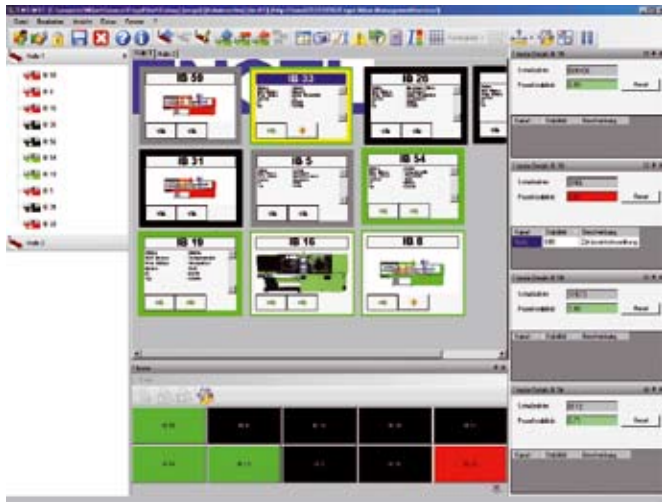


Optimum scalability thanks to decentralised data acquisition



Improved quality and transparency

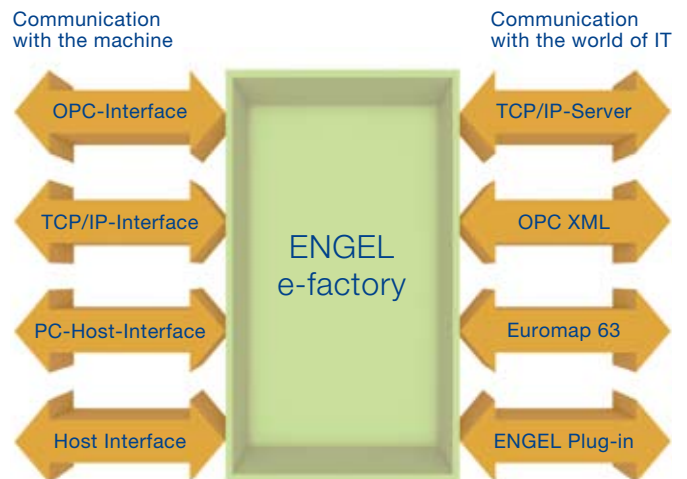
in data logging thanks to the use of a database for process, operative and setup data



The new IMSTAR process monitoring feature will be available as a module for ENGEL e-factory

New open communications interfaces

to the IT world



The open architecture with a variety of interfaces opens up ENGEL e-factory for future challenges

For more information on the ENGEL e-factory structure, functions and architecture, please refer to the e-factory brochure, or visit the e-factory micro-site at <http://e-factory.csd-engel.com>